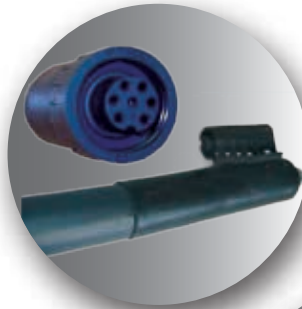


HOT MELT HOSES

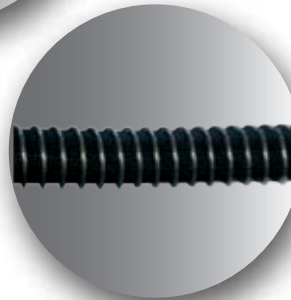
Engineered for Durability and Longevity

As a world leader in adhesive application engineering, Valco Melton is able to offer a larger range of hot melt hoses with improved market standard adaptability. Valco Melton hoses are the ideal solution for quality hot melt transport and optimal benefits.

- Industry standard compatible
- Flexible
- Interchangeable
- Versatile & dependable for all applications
- Proven design & quality guaranteed
- Long lasting design to remain "char" free
- "Nomex" and Flex Foam insulation for the best insulation and temperature stability in the industry



Washdown hoses option available with specialty fittings and rubber covers



Spring accessory and corrugated covers improve hose protection



Dual RTD Hot Melt Hoses



Convertible connectors go from Straight to 90 degrees for easy connections

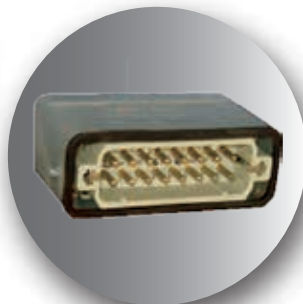


An ample range of diameters and lengths:

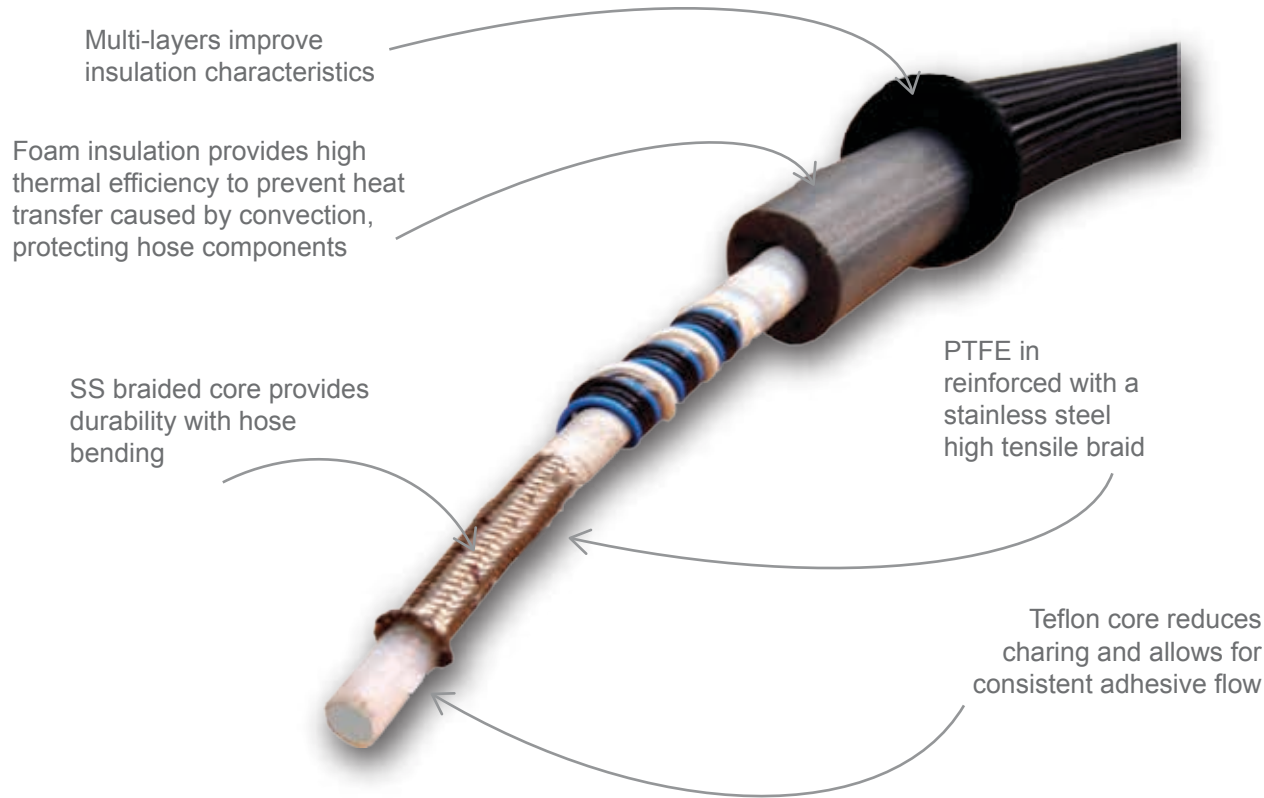
- \varnothing 6mm, \varnothing 8mm, \varnothing 10 mm, \varnothing 12 mm, \varnothing 16 mm
- Up to 26 m length



Electrical connections are compatible with market standards



Hoses available with harding connectors



Multi-layers improve insulation characteristics

Foam insulation provides high thermal efficiency to prevent heat transfer caused by convection, protecting hose components

SS braided core provides durability with hose bending

PTFE in reinforced with a stainless steel high tensile braid

Teflon core reduces charring and allows for consistent adhesive flow

- Valco Melton manufactures hot melt hoses using top of the line market components that are 100% mechanically and electronically interchangeable
- Hot Melt Hoses are temperature sensed by Ni-120 or PT-100 RTD
- Accessories include brackets, fittings, hose protectors, corrugated and braided covers
- Valco Melton hoses are CE certified

Technical Specifications

Characteristics	Hot Melt Hoses			
Maximum Working Temperature	220°C			
Internal Diameter (mm)	Ø8	Ø13	Ø16	Ø20
Maximum Working Pressure (bar)	100	100	100	80
Power Consumption (W/m)	150	175	195	200
RTD	PT-100/ NI-120/ NTC 1000/ FEKO			
Minimum Curvature Radius (180°)	160 mm			
Voltage	200-240 VAC			



For more information, visit valcomelton.com or contact your local Valco Melton representative.
 World Headquarters: USA, Cincinnati, Ohio (Corporate Offices) • Tel:+1.513.874.6550 • Fax: +1.513.874.3612
 Europe Headquarters: Spain, Navarra • Tel:+34.948.321.580 • Fax:+34.948.326.584
 Asia Headquarters: China, Xiamen, Fujian • Tel:+86.592.591.7854 • Fax:+86.592.591.7834
info@valcomelton.com • Serving over 76 Countries Worldwide • valcomelton.com