

FLEXDRUM SERIES

200 L Drum Unloaders

FlexDrum Series Unloaders have been designed to work with any type of adhesive delivered in 200-liter drums, achieving melting rates that exceed other industry standards by up to 30%.

Features:

- Main machine communication protocols Modbus TCP and Ethernet
- Integrated grammage control for a precise and uniform application, accessible from an intuitive touchscreen panel
- Integrated width regulation for our FlexWrap Series Adjustable Width Applicators



Improved melting capacity. Finned or flat platens available to better adapt to the various adhesive types and melting rate needs. All platens are Teflon® coated and include cast-in heaters.

Optional Safety Features include a vent hood for easy connection with ventilation tube, as well as a platen protection system to shield operator from entrapments.



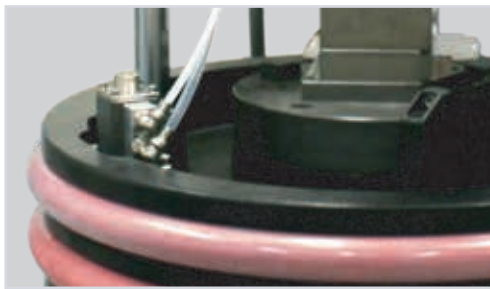
Faster drum changes.

A new drum fastening system facilitates drum changes for the operators, ensuring the new drum will always be accurately placed in the correct working position.

Optional drum clamp allows to work with adhesives delivered in fiber drums.



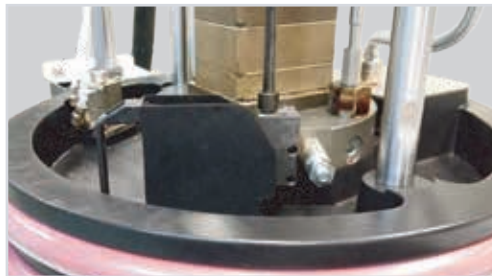
Tandem Mode. Working in tandem eliminates downtime associated with drum changes. FlexDrum Series can work in tandem by simply connecting the two unloaders with an Ethernet cable. No additional equipment or accessories needed.



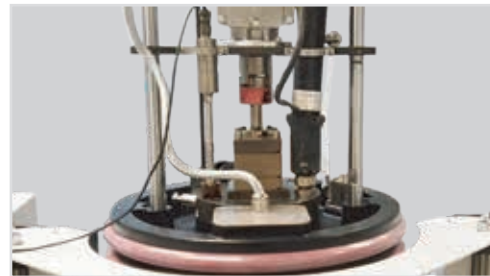
Automatic blow-off valve included



Featuring 6 high-power hose/gun connections



Built-in pressure relief valve adjusts adhesive output pressure. Optional pneumatic pressure relief valve is available.



The system can read the signal from a pressure transducer installed on the manifold or externally, closer to the application.

Technical Specifications

Characteristics	FlexDrum Series	
System	200L flat platen	200L finned platen
Drum Capacity	200 L	200 L
Max. Melting Capacity	50 Kg/h (*)	160 Kg/h (*)
Max. Pumping Rate	180 Kg/h	180 Kg/h
Working Temperature	80- 230 °C	
Max. Working Viscosity	90,000 cps	
Max. Working Pressure	80 bar	
Electrical Consumption	17 Kw	
Dimensions	Platen up: 1655 mm L x 716 mm W x 2402 mm H Platen down: 1655 mm L x 716 mm W x 1446 mm H	

(*) Melt rate may vary depending on specific adhesive type and working conditions

Max. Channel Power	Channel 1 / 2	Channel 3 / 4	Channel 5 / 6
Total per Channel (hose and gun)	1840W	4400W	4400W
Per Exit (hose or gun)	1840W	2200W	2200W



For more information, visit valcomelton.com or contact your local Valco Melton representative.

World Headquarters: USA, Cincinnati, Ohio (Corporate Offices) • Tel:+1.513.874.6550 • Fax: +1.513.874.3612

Europe Headquarters: Spain, Navarra • Tel:+34.948.321.580 • Fax:+34.948.326.584

Asia Headquarters: China, Xiamen, Fujian • Tel:+86.592.591.7854 • Fax:+86.592.591.7834

inquiry@valcomelton.com • Serving over 76 Countries Worldwide • valcomelton.com