



BRAILLE INSPECTION SYSTEM

ERO-BR is made to detect, analyze and verify the correctness of braille code imprinted on stretched cardboard boxes.

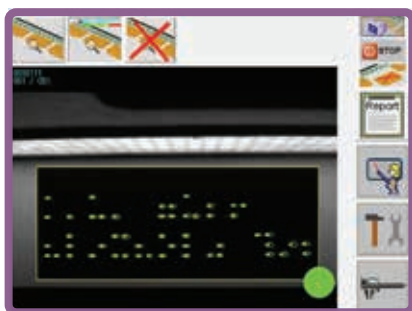
The ERO-BR Braille Inspection System ensures precise quality control by detecting missing Braille dots (including single-dot omissions) and identifying damage to the box at the Braille code location.



MIZE OPERATOR PROGRAMMING TASKS
REPORTS FOR DEEP ANALYSIS
NEW IMPROVED INTERFACE
COMPACT SIZE

Le dimensioni compatte della telecamera e la versatilità del dispositivo di controllo rendono l'ERO-BR un sistema facile da installare e intuitivo. Its intuitive interface ensures simple setup and smooth operation, allowing operators to configure and use the system efficiently. The defects informatinon and pictures are stored in the system for analysis.

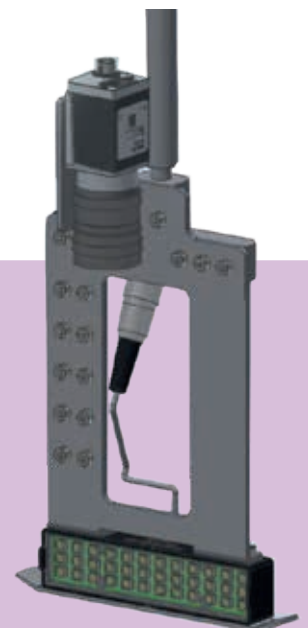
The control panel is a 12" panel PC while the images are analyzed in real time by a specially designed vision-PC.



Correct braille code



Incorrect braille code

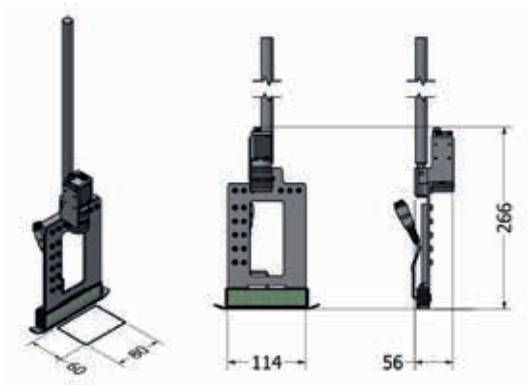


Camera	Inspects the Braille code on each box.
Photoeye	Contains the system's power electronics and vision-PC for real-time image analysis
Encoder	Detects machine movement to enable tracking of boxes on the machine
Electricity box	Detect, count and monitor the location of boxes
Screen	Show the operator the graphical user interface
Lamp + sound	Provides audible alarms and visual information about the status of the machine
Optional: Marking valve / Extractor / Kicker	Products to be discarded can be marked with fluorescent UV radiation ink or mechanically removed from the machine

SYSTEM SPECIFICATIONS

Max. production / hour	120,000 pieces/hour
Max. machine speed	> 350 m/min
Frame field	80 x 60 mm
Electric box weight	19 kg
Electrical box dimensions	170 x 300 x 500 mm

CAMERA DIMENSIONS



INSTALLATION REQUIREMENTS

Power box power supply	100-240 VAC, 50-60 Hz
Camera position	About 170 mm from the box



ERO
GLUING SYSTEMS

For more information, visit www.ero-gluers.com or contact your local representative.

Via Benedetto Castelli 38-40-42 • 25010 Montirone (Italy) • Tel: +39 030 2731503

info@ero-gluers.com • www.ero-gluers.com

ERO Gluing Systems Is a Valco Melton Company